

Numéro Du Style	<b>C020W</b>	
Collection	<b>Suited</b>	
Type De Produit	<b>Dalles De Moquette</b>	
Construction	<b>Standard</b>	<b>Data + Performance</b>
Type De Fabrication	<b>ISO 2424</b>	<b>tufted 1/10"   39.4 per 10cm</b>
Construction	<b>ISO 2424</b>	<b>Tufté Structuré Bouclé à Motif</b>
Méthode De Coloration	<b>EN 994</b>	<b>100% Solution Teinte</b>
Dimensions Du Produit	<b>EN 994</b>	<b>50 cm x 100 cm   6 tiles (3 m²) per box</b>
Sous-couche Primaire	<b>ISO 2424</b>	<b>Pet Non-Woven</b>
Sous-couche Secondaire	<b>ISO 2424</b>	<b>Comfortworx® Tile   La Couche Matrix Pad Contient 90 % De Contenu Recyclé</b>
Fibre	<b>ISO 2424</b>	<b>Ecosolution Q® Polyamide 6</b>
Epaisseur Du Velours	<b>ISO 1765</b>	<b>12.0 mm</b>
Épaisseur Du Velours Fini	<b>ISO 1766</b>	<b>2.3 mm</b>
Poids Total	<b>ISO 8543</b>	<b>4779 g/m²</b>
Poids Tufté	<b>ISO 2424</b>	<b>949 g/m²</b>
Poids Du Velours Utile	<b>ISO 8543</b>	<b>280 g/m²</b>
Densité Du Velours	<b>ISO 8543</b>	<b>0.117 g/cm³</b>

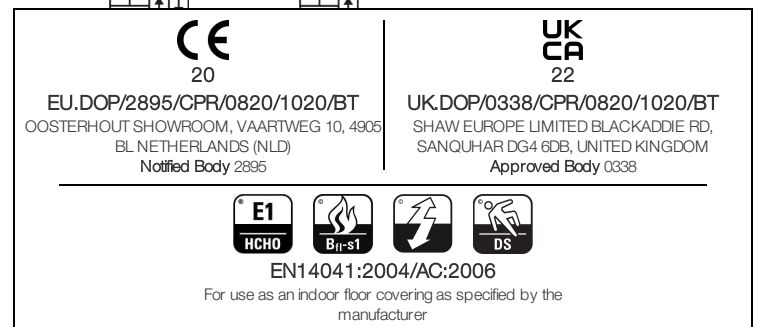
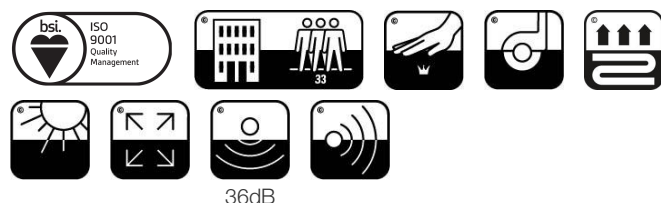
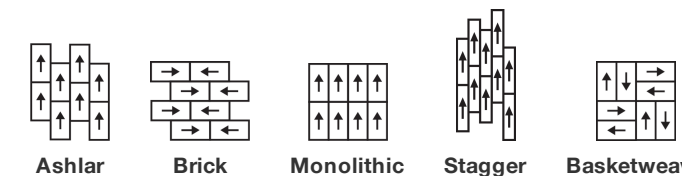


### Données

Points	<b>ISO 1763</b>	<b>156,000/m²   39.8 per 10cm</b>
Traitements Protecteurs		<b>SSP® Shaw Protection Du Sol</b>
Propension Electrostatique	<b>ISO 6356</b>	<b>≤ 2.0 kv (Stroll Test)</b>
Classification d'Utilisation	<b>EN 1307</b>	<b>33 Commercial Heavy</b>
Classification Luxe	<b>EN 1307</b>	<b>LC1</b>
Stabilité Dimensionnelle	<b>EN 986</b>	<b>≤ 0.2%</b>
Isolation Acoustique	<b>ISO 10140</b>	<b>36db</b>
Classification d'Absorption Sonore	<b>ISO 354/11654</b>	<b>0.35 Aw   Class D</b>
Résistance Thermique m² K/w	<b>ISO 8302</b>	<b>0.166 M² K/W Tog 1.66</b>
Dry Slip Resistance	<b>ISO 13893</b>	<b>Pass / No Pulled Loops</b>
Résistance De La Couleur À La Lumière	<b>ISO 105-B02</b>	<b>&gt;6</b>
Inflammabilité	<b>EN 13501-1</b>	<b>Bfl-S1 (Adhered Testing)</b>
Chaise À Roulette	<b>EN 985</b>	<b>≥2.4 Continuous USE</b>

**Limitée Commerciale De 15 Ans** subject to installation in full accordance with manufacturer's instructions and a regular effective cleaning and maintenance programme.

### Méthodes d'Installation Conseillées



Corporate Headquarters +1 800 257 7429 | +1 706 532 7984 | Atlanta +1 404 853 7429 | Bengaluru +91 80 6773 0202 | Beijing +86 10 6568 588 | Chicago +1 312 467 1331 | Dubai +971 4 584 6956 | Hong Kong +852 2623 0371 | Latin America (Miami) +1 305 827 5912 | London +44 207 961 4120 | Los Angeles +1 800 233 1614 | Melbourne +61 3 9939 8543 | Mexico City +55 5010 7600 | Mumbai +91 22 6284 5050 | Nantong +86 400 800 7429 | New York +1 212 953 7429 | Paris +33 (0) 1 81 22 44 39 | San Francisco +1 415 955 1920 | Santiago +562 2431 5000 x 550 | São Paulo +55 11 3071 1702 | Shanghai +86 21 3338 4000 | Singapore +65 6733 1811 | Sydney +1 800 556 302

Coordination Des Produits

Carpet Tile: **Beam Comfortworx® Tile, Braid Comfortworx® Tile, Check Comfortworx® Tile, Houndstooth Comfortworx® Tile, Houndstooth Taskworx® Tile, Check Taskworx® Tile, Textile Taskworx® Tile, Jacquard Taskworx® Tile, Beam Taskworx® Tile, Braid Taskworx® Tile**

Attributs + Certifications

Declaration of Performance	EU.DOP/2895/CPR/0820/1020/BT
Déclaration environnementale de produit (EPD)	Certifié Par Un Organisme Tiers Conformément Aux Normes ISO14044, ISO 14025 & EN15804
garantie environnementale	Take Back Policy Offered For All Comfortworx Products
ISO 9001	Certifié
pays d'origine	United Kingdom
BREEAM Contribution Credit	Certificate of Approval Schools/Offices/Health/Industrial Shed Retail

Well V2 Contribution Credit

X11 Long Term Emissions Control Part 2: Flooring Optimization	M1> Emissions Class For Building Material
--	---

Contribution À La Certification Leed

MR Credit: Building Product Disclosure and Optimisation Environmental Product Declarations - Option 1: Environmental Product Declaration (EPD)	3rd Party Certified in Accordance with ISO14044, ISO14025 & EN15804
MR Credit: Building Product Disclosure and Optimisation Material Ingredients - Option 1: Material Ingredient Reporting	HPD ( Version 2.1 )
"Crédit EQ : matériaux faibles émissions Option 1 : calculs par catégorie de produit"	Certified

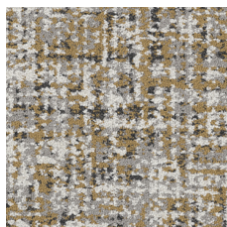
Air Quality

Indoor Air Comfort Gold	Certified
M1	Certified

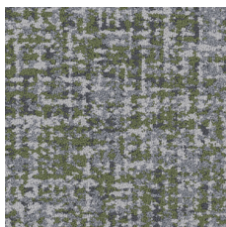
Memberships

WGBC Framework	WGBC Framework
UKGBC	UKGBC
Emirates Green Building Council	Emirates Green Building Council
Chemsec	Chemsec

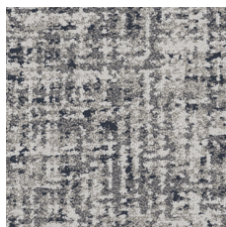
### Available Colorways



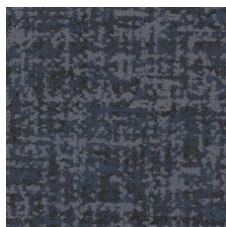
Saffron 79210



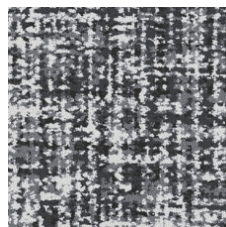
Bamboo 79375



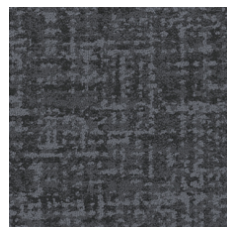
Denim 79485



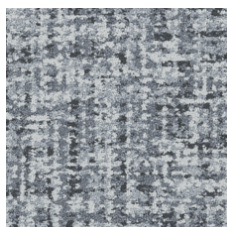
Indigo 79496



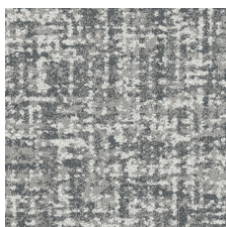
Merino 79500



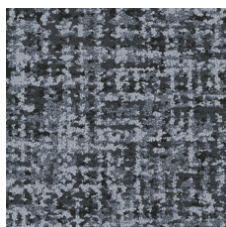
Patent 79505



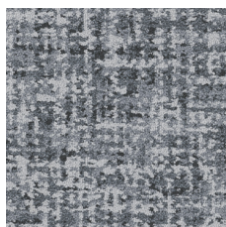
Cotton 79515



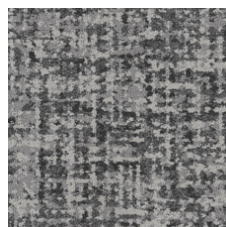
Muslin 79516



Mohair 79530



Wool 79535



Flax 79557



Angora 79596

### Informations Supplémentaires

\*\*Manufactured in ISO 9001 certified facility. Meets or exceeds all local and national regulations in country of manufacture.

[Installation Guidelines](#)

Limitée commerciale de 15 ans

Specifications are subject to nominal manufacturing variance. Material supply and/or manufacturing processes may necessitate changes without notice.

This product is an exclusive design and may not be duplicated in any manner. Use of this design in the creation of another product design is also strictly prohibited.

Visit [shawcontract.com/testing](https://shawcontract.com/testing) for more information.



Corporate Headquarters +1 800 257 7429 | +1 706 532 7984 | Atlanta +1 404 853 7429 | Bengaluru +91 80 6773 0202 | Beijing +86 10 6568 588 | Chicago +1 312 467 1331 | Dubai +971 4 584 6956 | Hong Kong +852 2623 0371 | Latin America (Miami) +1 305 827 5912 | London +44 207 961 4120 | Los Angeles +1 800 233 1614 | Melbourne +61 3 9939 8543 | Mexico City +55 5010 7600 | Mumbai +91 22 6284 5050 | Nantong +86 400 800 7429 | New York +1 212 953 7429 | Paris +33 (0) 1 81 22 44 39 | San Francisco +1 415 955 1920 | Santiago +562 2431 5000 x 550 | São Paulo +55 11 3071 1702 | Shanghai +86 21 3338 4000 | Singapore +65 6733 1811 | Sydney +1 800 556 302

© 2024 Shaw Industries Group, Inc., a Berkshire Hathaway Company  
May 14, 2024

3 of 3